



CE

**STEEL
HINGED
DOOR SETS**

PERSONNEL DOOR



External Personnel Handle



Internal Personnel Door Handle



Extra locks at low & high level



Central lock plate with adjustable latch keep



Recessed lock keep



Multi-point locking system, 65mm euro profile cylinder, stainless steel lever handles and security escutcheons.

Standard Fittings

DOOR LEAF

- Rebated door with zinc plated sheet steel.
- 25mm honeycomb cell resin impregnated paper core.
- Closer/stay reinforcement at top of leaf.
- Anti jemmy bolts on hinge side of leaf.
- Door leaf thickness 50mm.
- Textured grey polyester paint suitable to accept either powder coating or site painting.

DOOR FRAME

- Zinc plated steel sheet.
- Stainless steel 12mm low profile threshold.
- Fully welded construction.
- 3x adjustable fixing points each side of the frame.
- Supplied ready assembled with door mounted in frame.
- Textured grey polyester paint suitable to accept either powder coating or site painting.

DOOR HARDWARE

- Stainless steel butt hinges screwed to the frame and door - 1 1/2 Pairs.

OPTIONAL EXTRAS



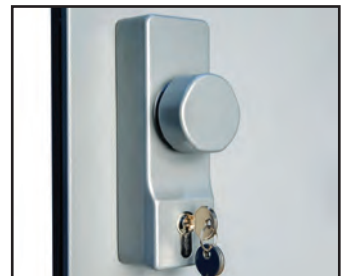
Door friction/limit stay, will restrict the doors opening to approximately 90°



Arrone 6800 Door closer with adjustable closing speed/latch action.



Exidor 322 lever operated outside access device. (Exit Door Only)



Exidor 302EC outside access device with Knob. (Exit Door Only)

EXIT DOOR



EXIT DOOR ONLY

Threaded Insert for easy installation of panic bolt furniture



Anti-Jimmy Dog Bolts on hinge side of door



Adjustable Fixing Points 3 on both sides of frame



Stainless Steel Threshold 12mm high



3 Stainless Steel Butt Hinges



Door leaf prepared with threaded nutserts located to accept Exidor 294 panic bolt (panic bolt supplied loose complete with shoot tubes cut to size).



Door head frame pre-drilled to accept top trip and top shoot



Door leaf is prepared for the Exidor 294 panic bolt



Threshold pre-drilled to accept bottom shoot and keep

ACCESSORIES

Side Frame Extension Kit

KIT COMPRISES:

- Pair of Width Extension Frames
- Textured Grey Polyester Painted (suitable to accept either powder coating or site painting)
- Extension Frame Slotted at Door Frame Adjustable Fixing Points

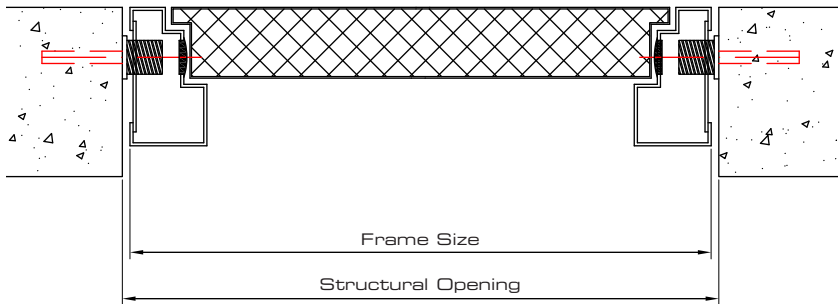


STANDARD SIZES

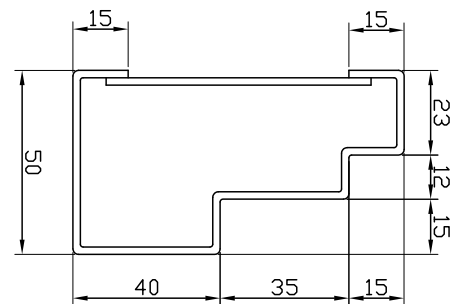
| | |
|--|--------------|
| Standard Opening Width | 900mm/1000mm |
| Max. Opening Width with Extension Frames | 965mm/1065mm |

Technical Specification

TYPICAL PLAN

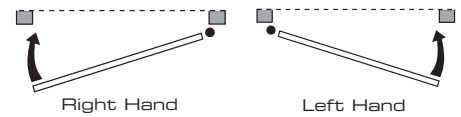


FRAME DETAIL



STANDARD SIZES

| STRUCTURAL OPENING | | FRAME SIZE | | ACCESS CLEARANCE at 90° excluding hardware | |
|--------------------|--------|------------|--------|--|--------|
| WIDTH | HEIGHT | WIDTH | HEIGHT | WIDTH | HEIGHT |
| 900mm | 2100mm | 890mm | 2090mm | 760mm | 2020mm |
| 1000mm | 2100mm | 990mm | 2090mm | 860mm | 2020mm |



HOW TO FIND US

OSA Door Parts, Unit 4, Ashville Industrial Estate,
Runcorn, Cheshire, WA7 3EZ. UK.




OSA
DOOR PARTS
TRADE SUPPLIERS

To order please contact us:

Tel: 01928 703 580 Fax: 01928 759 984

Email: sales@osadoorparts.co.uk



We reserve the right to change specifications and prices without prior notice or alteration of this brochure.

